

# INTERSTATE BUSINESS PARK

## North Branch, MN

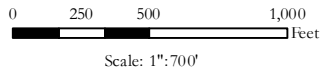


### Interstate Business Park

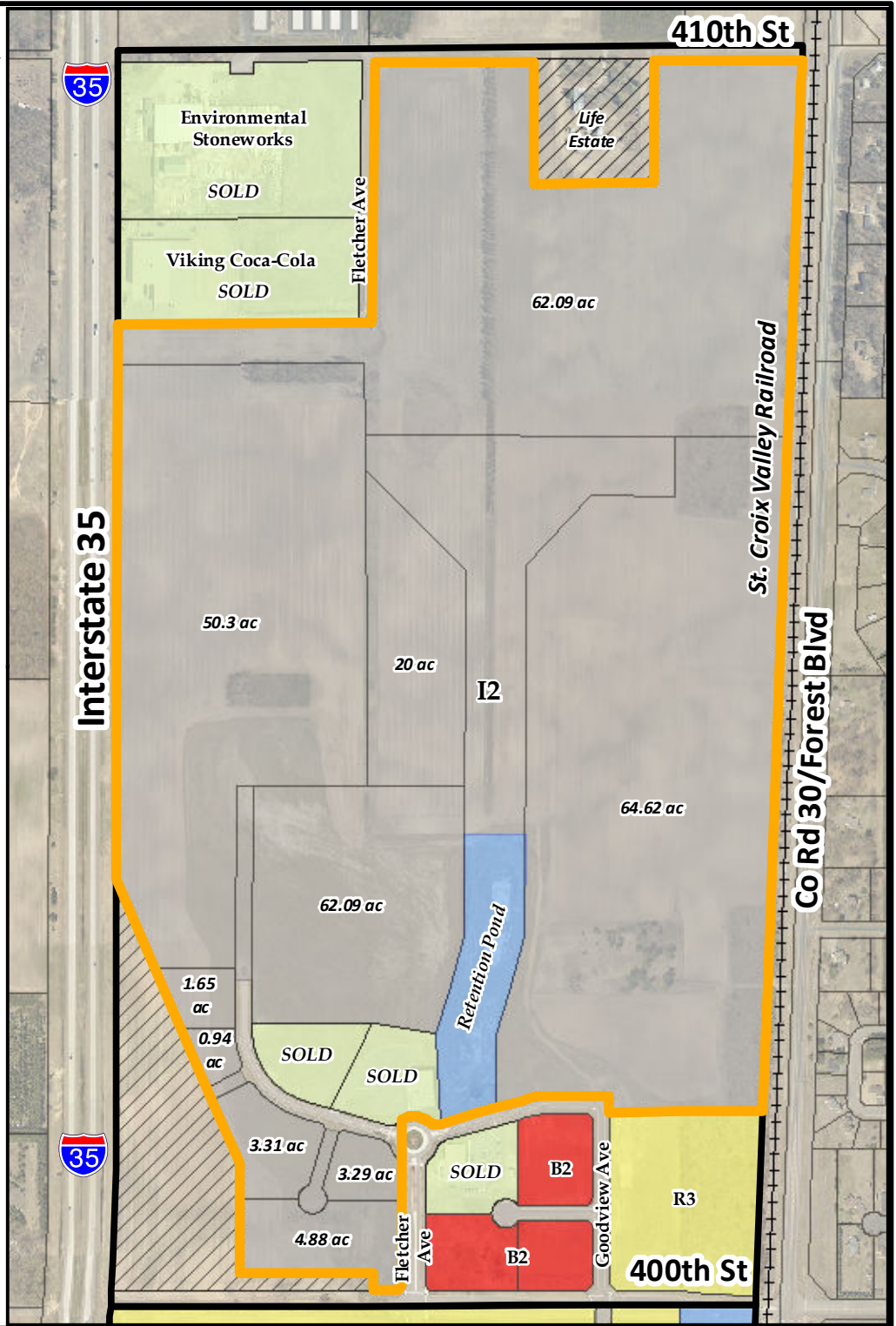
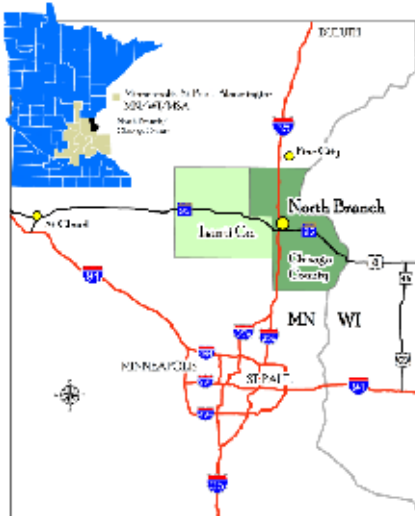
Industrial and Commercial  
Sites Available

#### SITE BOUNDARY MAP

- ShovelReady
- Industrial Park Boundary
- Life Estate



- Ready for Immediate Development
- Great access and visibility to I35
- Potential for Rail Service
- 240+ Acres Available
- Located 30 Minutes north of the Twin Cities
- Employers Include:
  - \* Andersen Corporation (180 emp)
  - \* Branch Manufacturing (72 emp)
  - \* Zinpro (62 emp)
  - \* Wisconsin Coil Spring (56 emp)



### CITY OF NORTH BRANCH

6408 Elm Street - PO Box 910  
North Branch, MN 55056  
Phone: 651-674-8113  
Fax: 651-674-8262  
www.ci.north-branch.mn.us

### CONTACT INFORMATION

Renaef Fry  
City Administrator  
651-277-5229  
renaef@ci.north-branch.mn.us

Carla Vita  
Community Development Director  
651-277-5227  
carlav@ci.north-branch.mn.us