

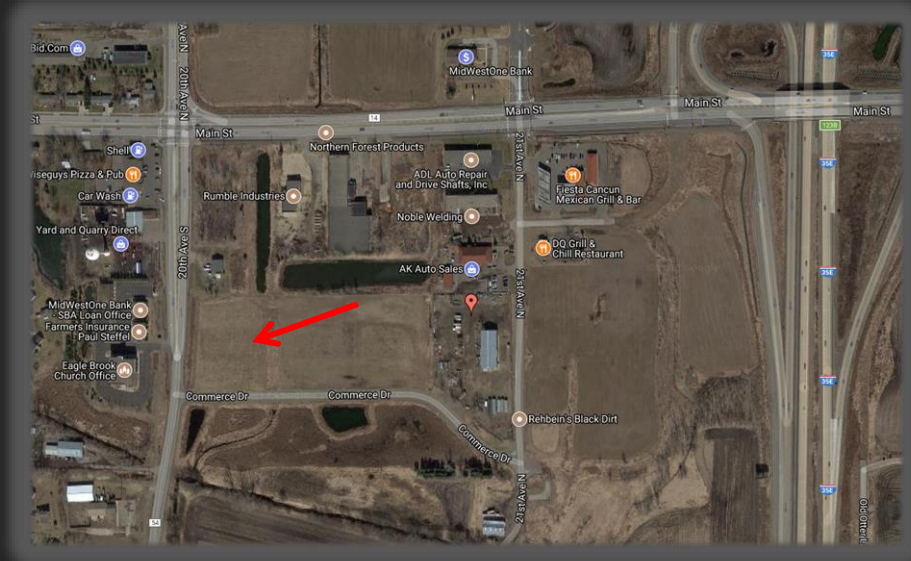
# MINNESOTA IS SHOVEL READY

## Clearwater Business Park CENTERVILLE, MINNESOTA

### A CERTIFIED DEVELOPMENT SITE READY FOR YOUR NEXT PROJECT!

#### Clearwater Business Park Highlights:

- 2 acres certified as Minnesota Shovel Ready
- Direct frontage on either Commerce Drive or 20<sup>th</sup> Avenue South with easy access to I-35 E
- All infrastructure in place
- Zoned B-1, Commercial
- Neighboring parcel is slated for construction of a 20,000 square foot building housing Ruffridge Johnson Equipment Company who is relocating from Minneapolis to Centerville



For more information on the site, contact:

Mike Ericson, City Administrator  
City of Centerville  
Direct: 651-792-7931

[mericson@centervillemn.com](mailto:mericson@centervillemn.com) | [www.centervillemn.com](http://www.centervillemn.com)

